

# WELCOME

## SerenityWell

### Educational Mindsphere (OPC) Pvt. Ltd.

(An ISO 9001:2015 company)

[www.serenitywell.in](http://www.serenitywell.in)



Institutional  
Counseling and Consulting Services

MINDSPHERE

# WHAT IS PSYCHOMETRIC TEST

Psychometric tests are tools used by psychologists and counselors to assess various aspects of an individual's psychological functioning. These tests are standardized to ensure reliability and validity.

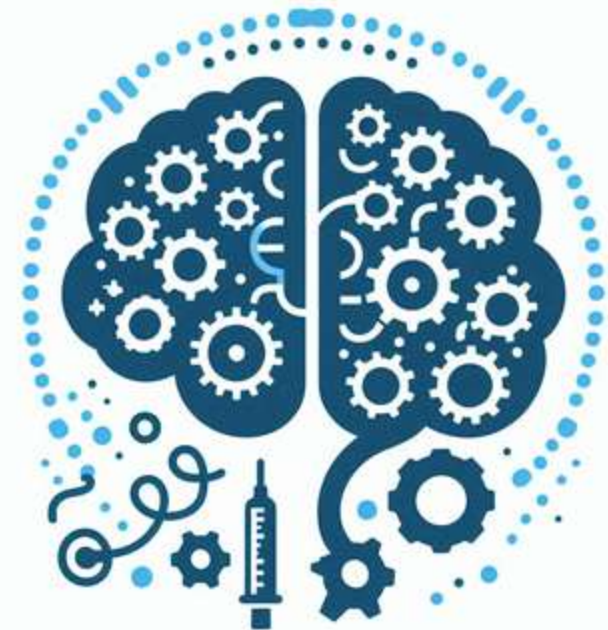




# TYPES OF TESTS

## Intelligence (Psychometric Test)

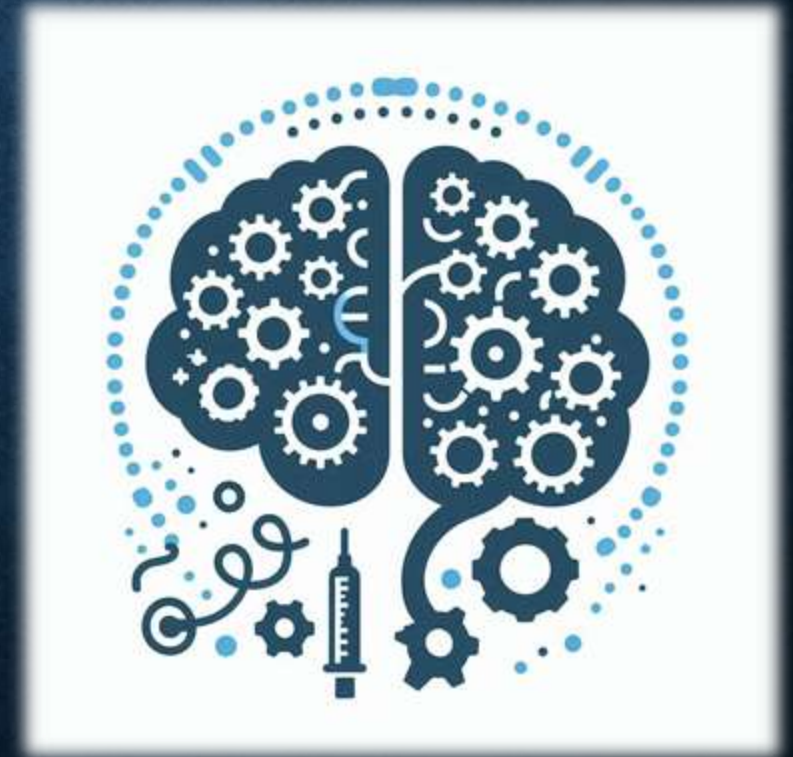
Measure cognitive abilities such as reasoning, problem-solving, and memory.



# TYPES OF TESTS

## Personality (Psychometric Test)

Assess personality traits,  
behaviors, and preferences.

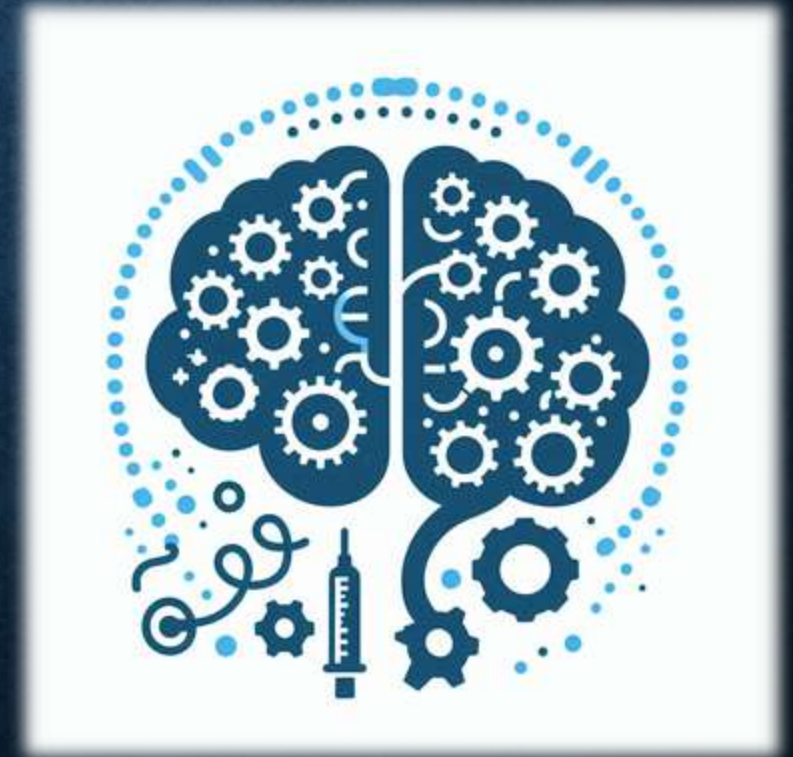




# TYPES OF TESTS

## Aptitude (Psychometric Test)

Evaluate specific skills or abilities related to academic or vocational domains.



# BENEFITS OF TESTS

## Facilitating Self-Understanding

Psychometric tests help individuals gain insights into their strengths, weaknesses, and preferences, fostering self-awareness and personal growth.





# BENEFITS OF TESTS

## Identifying Strengths and Weaknesses

By identifying areas of strength and areas needing improvement, psychometric tests guide personalized interventions and educational planning.



# BENEFITS OF TESTS

## Guiding Career and Academic Planning

Psychometric tests assist students in exploring career options and making informed decisions about their academic paths based on their abilities and interests.





# IMPLIMENTING OF TESTS IN SCHOOLS

## Integration into School Counseling Programs

Psychometric testing can be integrated into comprehensive school counseling programs to support students' academic and personal development.



# IMPLIMENTING OF TESTS IN SCHOOLS

## Training for Counselors

School counselors require training in administering, interpreting, and utilizing psychometric tests effectively to provide meaningful support to students.





# IMPLIMENTING OF TESTS IN SCHOOLS



## Ethical Considerations

It's essential to adhere to ethical guidelines when using psychometric tests, including ensuring confidentiality, obtaining informed consent, and interpreting test results accurately.



# INTEGRATING PSYCHOMETRIC TESTS WITH COUNSELING



## Using Test Results to Inform Counseling Sessions

Counselors can utilize psychometric test results to gain a deeper understanding of students' strengths, challenges, and preferences, informing the development of personalized counseling plans.





# INTEGRATING PSYCHOMETRIC TESTS WITH COUNSELING

## Tailoring Counseling Approaches Based on Test Outcomes

Psychometric tests help counselors tailor their counseling approaches to match students' unique characteristics and needs, maximizing the effectiveness of interventions.



# INTEGRATING PSYCHOMETRIC TESTS WITH COUNSELING



## Collaborative Efforts Between Counselors and Psychologists

Collaborative efforts between school counselors and psychologists facilitate the seamless integration of psychometric testing and counseling, ensuring holistic support for students.





# CASE STUDIES

## Using Psychometric Testing to Assist a Student in Career Decision Making

This case study illustrates how a high school student utilized aptitude and interest assessments to explore career options and develop a career plan with the support of a school counselor.





# CASE STUDIES

## Providing Counseling Support to a Student with Anxiety Using CBT Techniques

This case study demonstrates how a middle school student with anxiety issues benefited from individual counseling sessions focused on cognitive-behavioral techniques to manage anxiety symptoms effectively.





# WHY US

WE ARE FOREFRONT IN  
**PSYCHOLOGY DOMAIN**

WE ENCOURAGE  
**MANUAL TESTING**

BI-LINGUAL  
**REPORTS IN ENGLISH - PUNJABI**

WE ARE  
**ONE CALL AWAY**



# CONTACT US

We are happy to help you, you may contact us on  
our helpline

**Contact Number:**

**8054963570 / 8360974390**

**Email ID:**

**[business.serenitywell@outlook.com](mailto:business.serenitywell@outlook.com)**

**Website:**

**<https://www.serenitywell.in>**



**SERENITYWELL**  
MINDSPHERE

Institutional  
Counseling and Consulting Services

Institutional  
Counseling and Consulting Services

MINDSPHERE